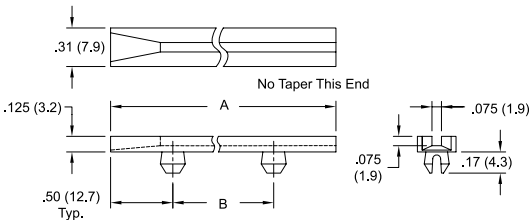


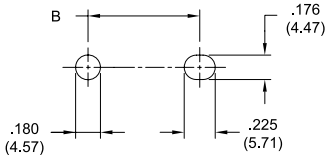


STANDARD PCB CARD GUIDES & PULLERS

RSSD
Snap-In Card Guide



Recommended Mounting Holes

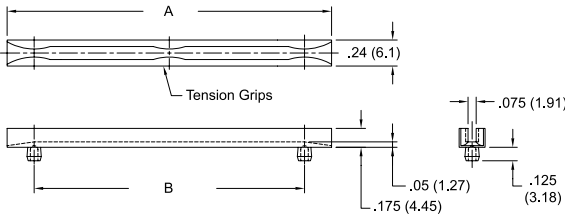


Mounts into Panel Thickness: .047-.090 (1.2-2.3)

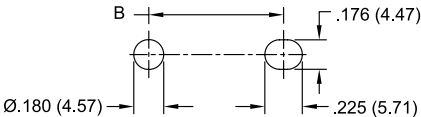
- No tools required for assembly
- Material: UL94 V-2 Nylon 6/6
- Color: Natural

Item No.	A Ref.	B	Accepts PCB Thickness	Bulk Pack Qty.
RSSD-250	2.5 (63.5)	1.5 (38.1)	.062 (1.6)	500
RSSD-300	3.0 (76.2)	2.0 (50.8)	.062 (1.6)	500
RSSD-350	3.5 (88.9)	2.5 (63.5)	.062 (1.6)	500
RSSD-400	4.0 (101.6)	3.0 (76.2)	.062 (1.6)	500
RSSD-450	4.5 (114.3)	3.5 (88.9)	.062 (1.6)	500
RSSD-450-300	4.5 (114.3)	3.0 (76.2)	.062 (1.6)	500
RSSD-500	5.0 (127)	4.0 (101.6)	.062 (1.6)	500
RSSD-550	5.5 (139.7)	4.5 (114.3)	.062 (1.6)	500
RSSD-600	6.0 (152.4)	5.0 (127.0)	.062 (1.6)	500
RSSD-650	6.5 (164.1)	5.5 (139.7)	.062 (1.6)	500
RSSD-700	7.0 (177.8)	6.0 (152.4)	.062 (1.6)	500
RSSD-750	7.5 (190.5)	6.5 (165.1)	.062 (1.6)	500
RSSD-800	8.0 (203.2)	7.0 (177.8)	.062 (1.6)	500

RCGH
Rack Card Guide



Recommended Mounting Holes

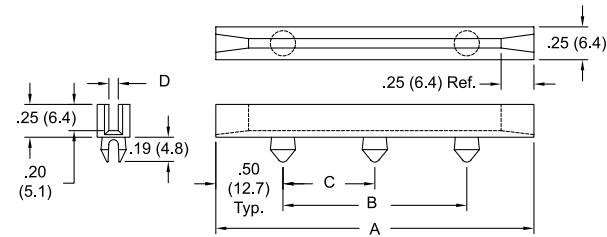


Mounts into Panel Thickness: .062 (1.6)

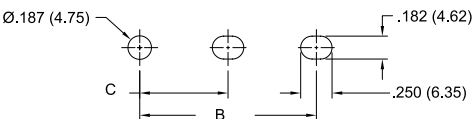
- Side grips hold board in place
- Hollow pin design eases insertion
- Material: UL94 V-2 Nylon 6/6
- Color: Natural

Item No.	A Ref.	B	Number of Grips	Accepts PCB Thickness	Bulk Pack Qty.
RCGH-25	2.5 (63.5)	2.0 (50.8)	2	.062 (1.6)	500
RCGH-30	3.0 (76.2)	2.5 (63.5)	3	.062 (1.6)	500
RCGH-35	3.5 (88.9)	3.0 (76.2)	3	.062 (1.6)	500
RCGH-40	4.0 (101.6)	3.5 (88.9)	4	.062 (1.6)	500
RCGH-45	4.5 (114.3)	4.0 (101.6)	4	.062 (1.6)	500
RCGH-50	5.0 (127)	4.5 (114.3)	4	.062 (1.6)	500
RCGH-55	5.5 (139.7)	5.0 (127)	5	.062 (1.6)	500
RCGH-60	6.0 (152.4)	5.5 (139.7)	5	.062 (1.6)	500

RDC
Deep Channel Card Guide



Recommended Mounting Holes



Mounts into Panel Thickness: .047 - .090 (1.2 - 2.3)

- Slot depth of .200 allows for maximum board retention
- Good for high vibration and shock applications
- Material: UL94 V-0 Nylon 6/6
- Color: Black

Item No.	A Ref.	B	C	D	Accepts PCB Thickness	Bulk Pack Qty.
RDC-250	2.5 (63.5)	1.5 (38.1)	-	.080 (2)	1/16 (1.6)	500
RDC-450	4.5 (114.3)	3.5 (88.9)	-	.080 (2)	1/16 (1.6)	500
RDC-600	6.0 (152.4)	5.0 (127)	-	.080 (2)	1/16 (1.6)	500
RDC-800	8.0 (203.2)	7.0 (177.8)	3.5 (88.9)	.080 (2)	1/16 (1.6)	500
RDC-450-102	4.5 (114.3)	3.5 (88.9)	-	.102 (2.6)	3/32 (2.4)	500
RDC-600-102	6.0 (152.4)	5.0 (127)	-	.102 (2.6)	3/32 (2.4)	500
RDC-800-102	8.0 (203.2)	7.0 (177.8)	3.5 (88.9)	.102 (2.6)	3/32 (2.4)	500
RDC-450-130	4.5 (114.3)	3.5 (88.9)	-	.132 (3.4)	1/8 (3.2)	500
RDC-600-130	6.0 (152.4)	5.0 (127)	-	.132 (3.4)	1/8 (3.2)	500
RDC-800-130	8.0 (203.2)	7.0 (177.8)	3.5 (88.9)	.132 (3.4)	1/8 (3.2)	500